



Australian Government

Department of Health and Ageing

Aboriginal and Torres Strait Islander Health Performance Framework

2006 Report



Australian Government

Department of Health and Ageing

Report Findings

Tier 1: Health Status and Outcomes

Improvements:

- Mortality
- Infant Mortality
- Deaths due to Circulatory Disease
- Hospitalisation for Pneumonia

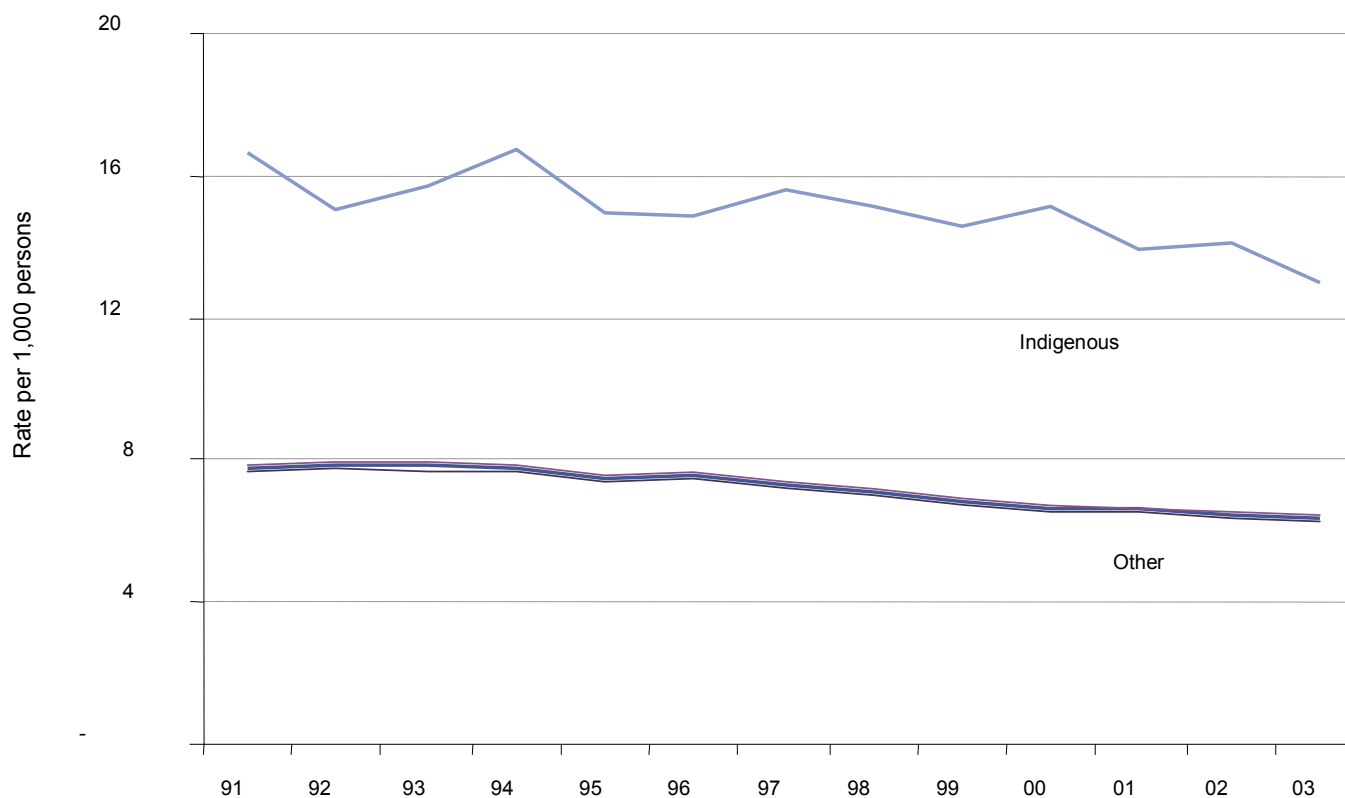
Areas of continuing concern:

- Deaths due to chronic conditions
- Hospitalisation for Injury and Poisoning
- End Stage Kidney Disease
- Low Birthweight
- Social and Emotional Well Being
- Chronic Ear Disease
- Oral Health
- STIs



Mortality

Age standardised mortality rates by Indigenous status, WA, SA and NT, 1991-2003

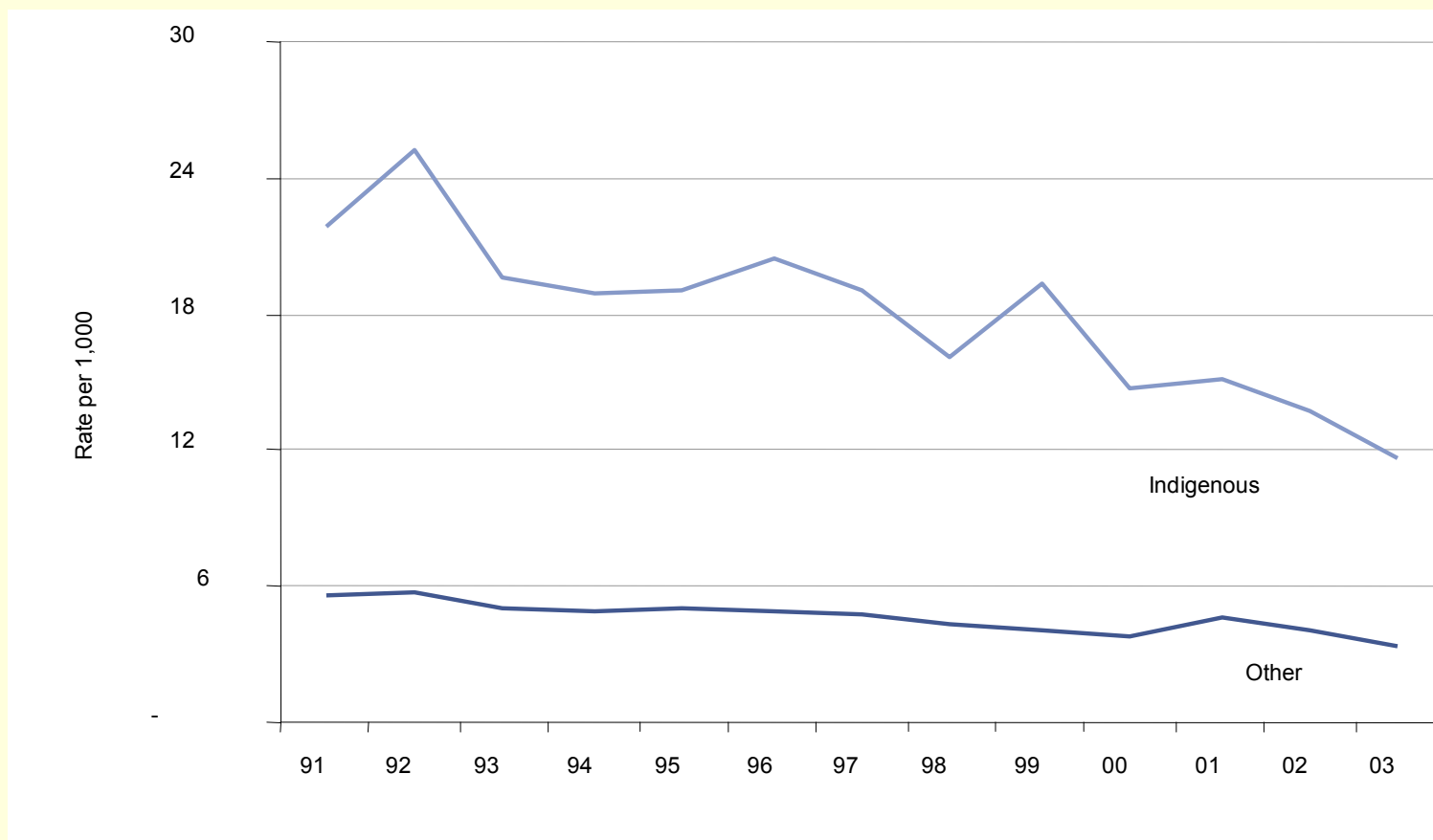


Source: AIHW National Mortality Database



Infant Mortality

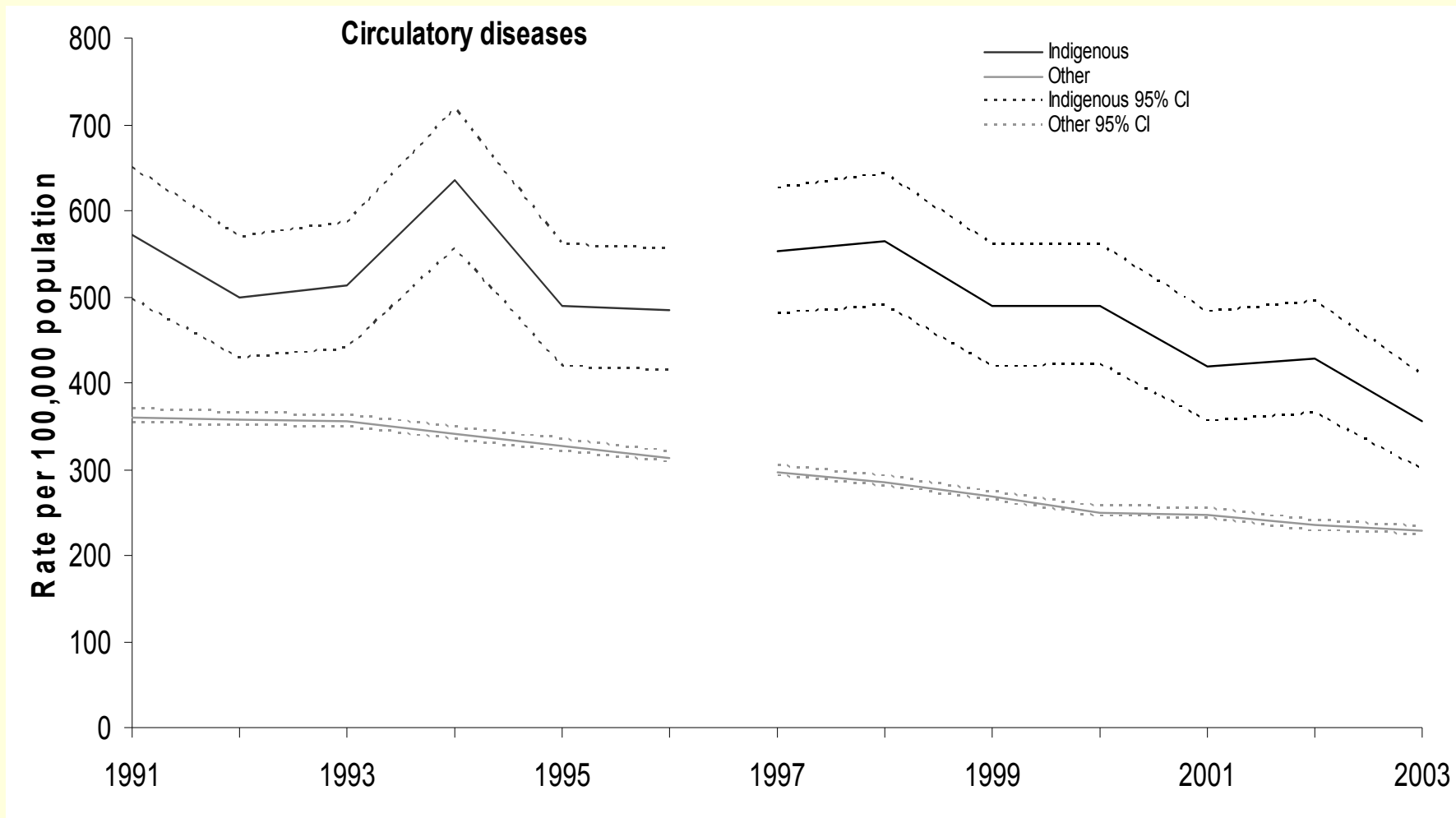
Infant mortality rates Aboriginal and Torres Strait Islander infants and other Australians, WA, SA and NT, 1991-2003





Deaths due to circulatory disease

Declined at a faster rate for Indigenous Australians than other Australians and the gap has narrowed



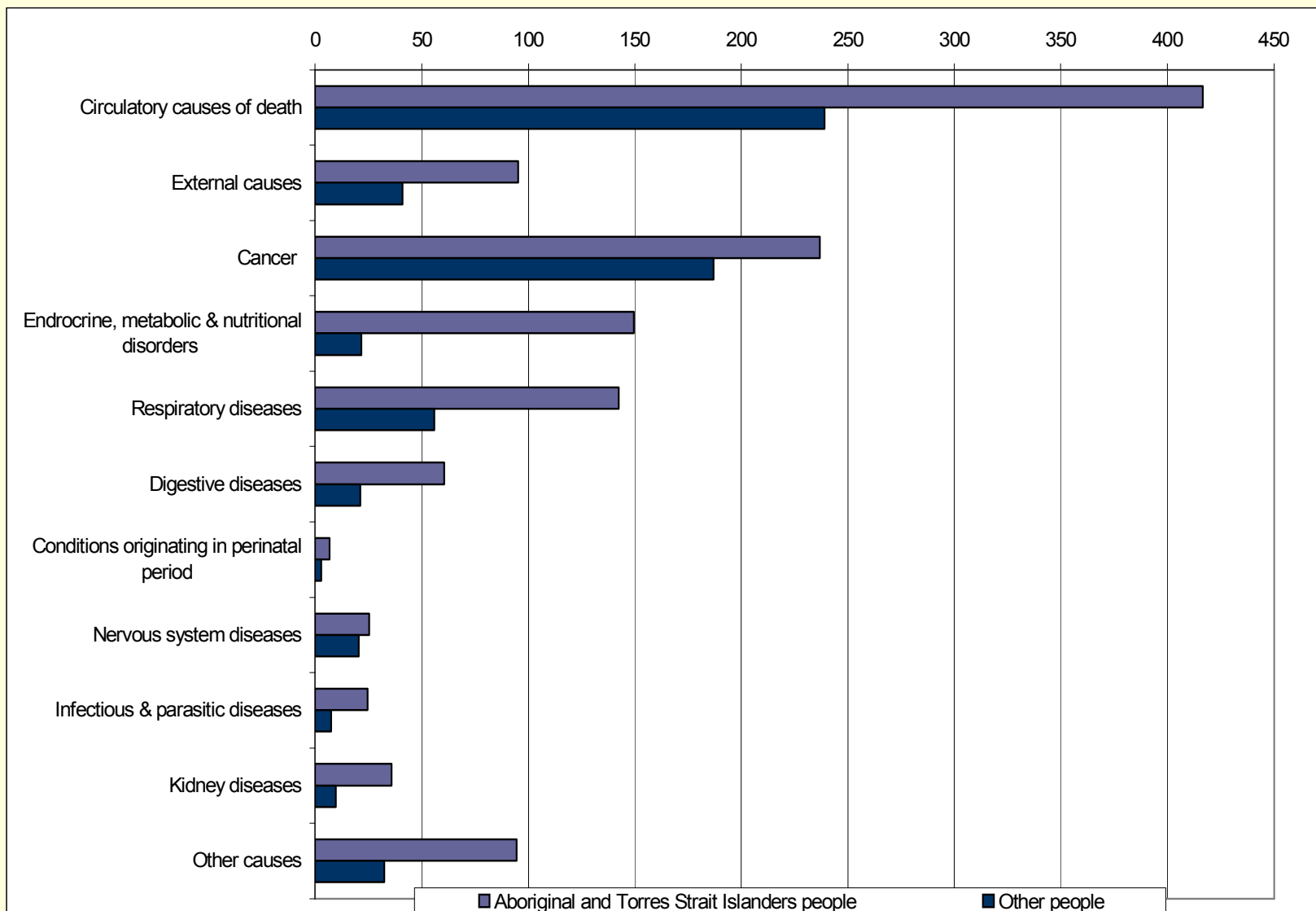


Australian Government

Department of Health and Ageing

Areas of continuing concern

Causes of mortality (rate per 100, 000 age standardised) by Indigenous status, Qld, WA, SA and NT 2000-04



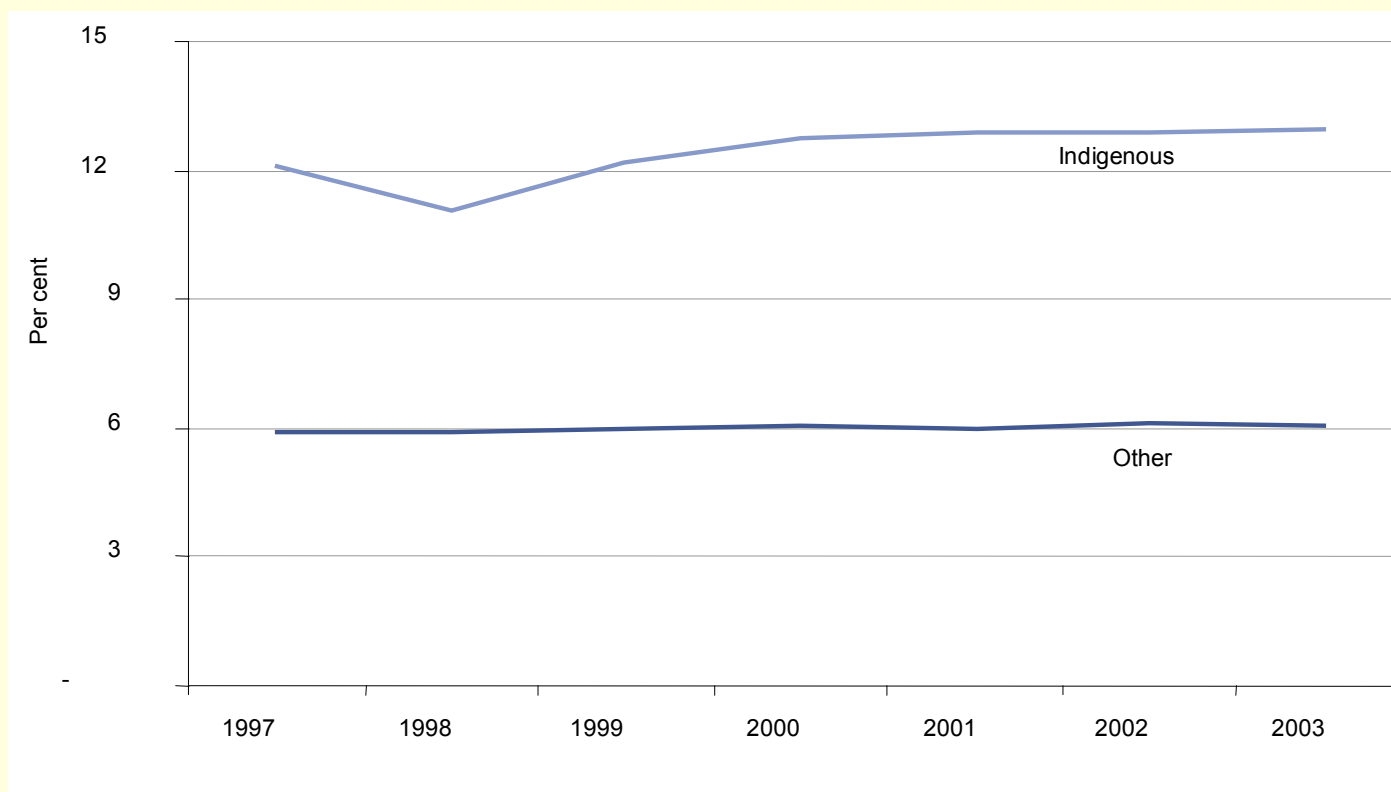
Source: AIHW National Hospital Morbidity Database



Low birthweight

- This is twice as common for babies born to Aboriginal and Torres Strait Islander mothers than other Australian babies

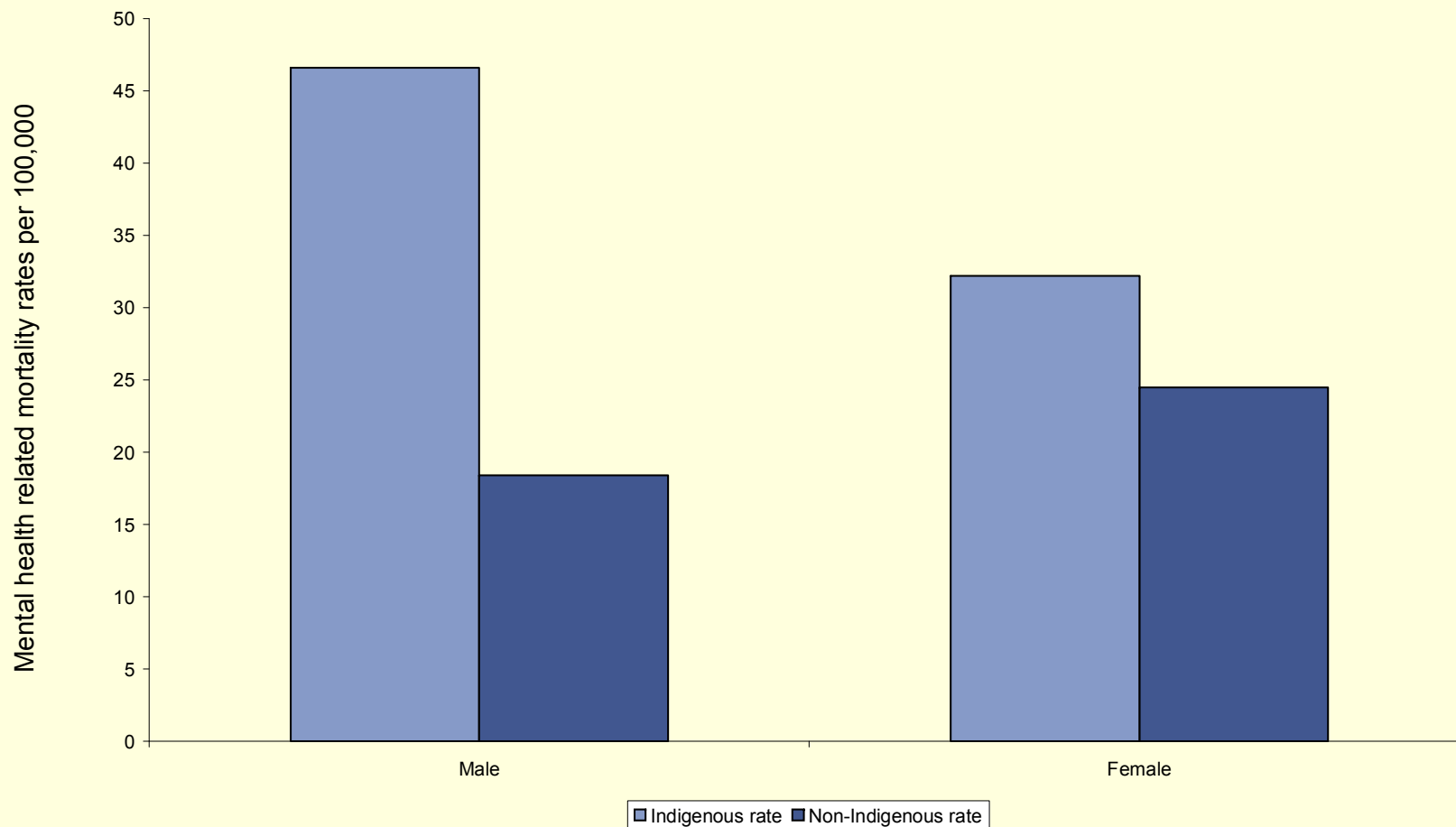
Low birthweight babies per 100 live births, by Indigenous status of the mother, Australia 1997-2003





Social and Emotional Well Being

Mental health related mortality rates per 100,000, by Aboriginal and Torres Strait Islander status, by age group and sex, QLD, WA, SA, & NT, 2000-2004

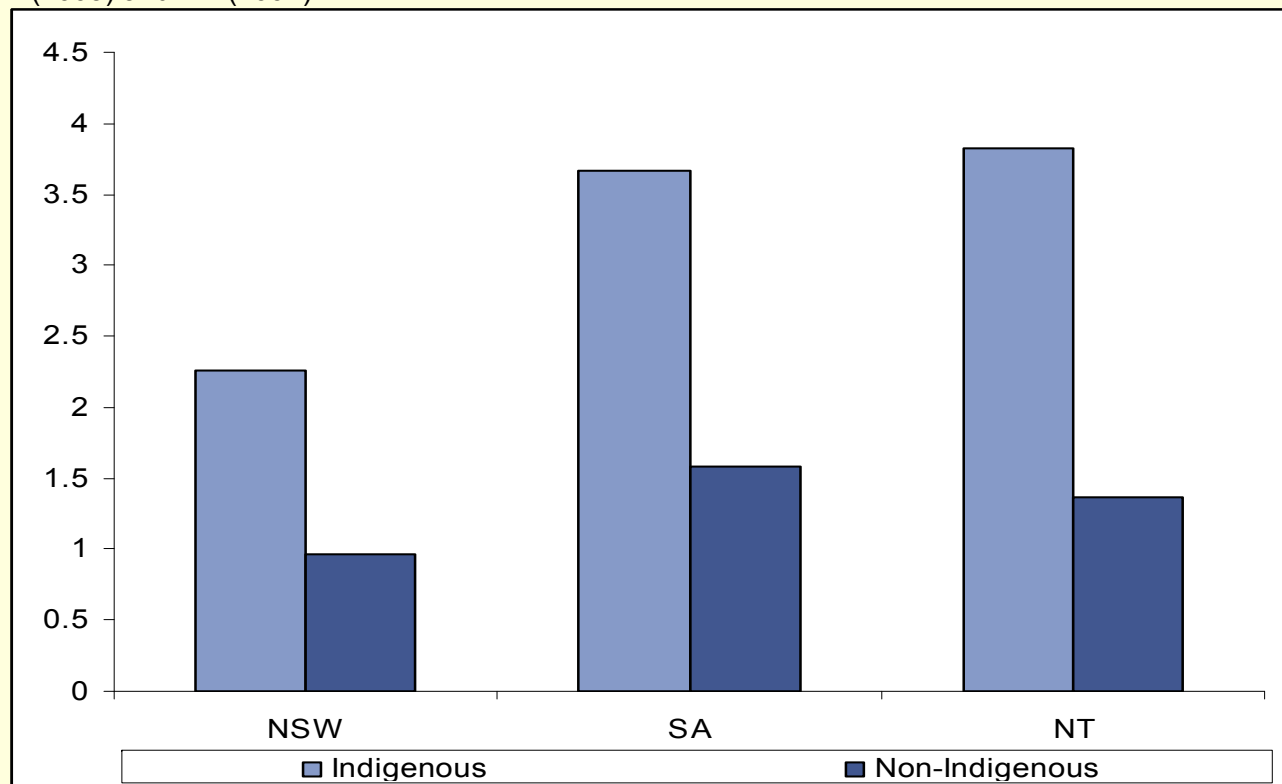




Other areas of concern

- Chronic Ear Disease
- Sexually Transmissible Infections
- Oral Health

Mean number of decayed, missing or filled teeth children aged 4-6 years, by Indigenous status, NSW (2000), SA (2003) and NT (2002)





Australian Government

Department of Health and Ageing

Tier 2: Health Determinants

Improvements:

- Education
- Employment

Areas of continuing concern:

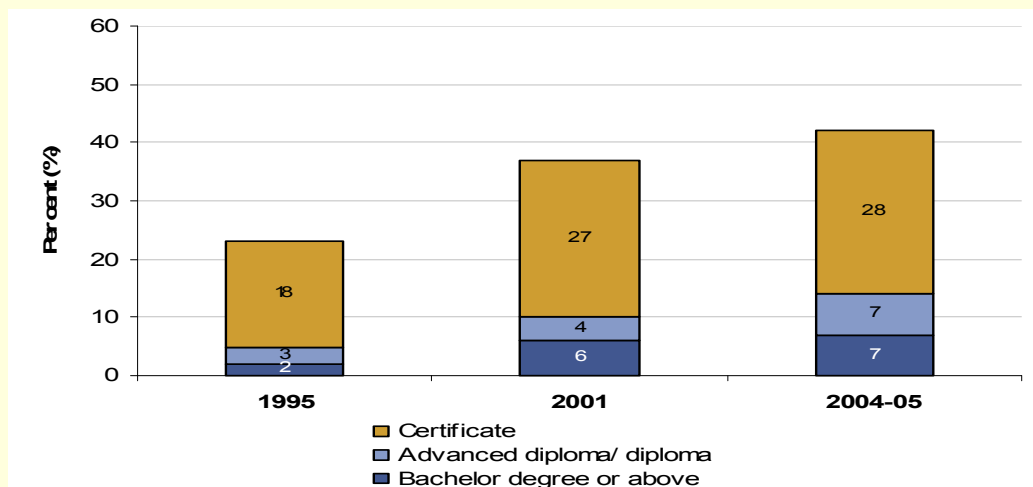
- Access to safe water, sewerage, electricity
- Overcrowding in housing
- Low income and distribution of income
- Exposure to violence, child abuse and neglect,
- Contact with the criminal justice system, including imprisonment
- Smoking, alcohol consumption, physical activity, nutrition and overweight and obesity



Improvements

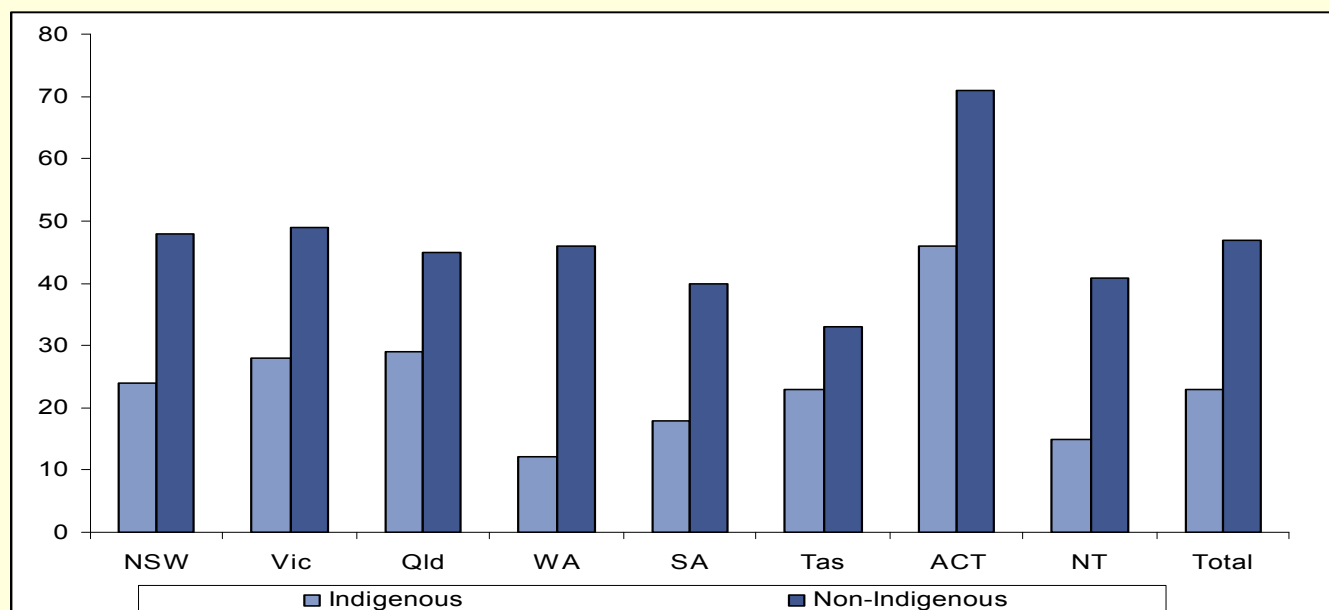
- Education

Non-school qualifications, Indigenous Australians 1995-2005



Source: ABS & AIHW analysis of 1995 and 2004-05 National Aboriginal and Torres Strait Islander Health Survey and National Health Surveys and 2001 National Health Survey (and Indigenous supplement)

Proportion completing Year 12, by state/territory and Indigenous status, persons 18 years and over, 2004-2005

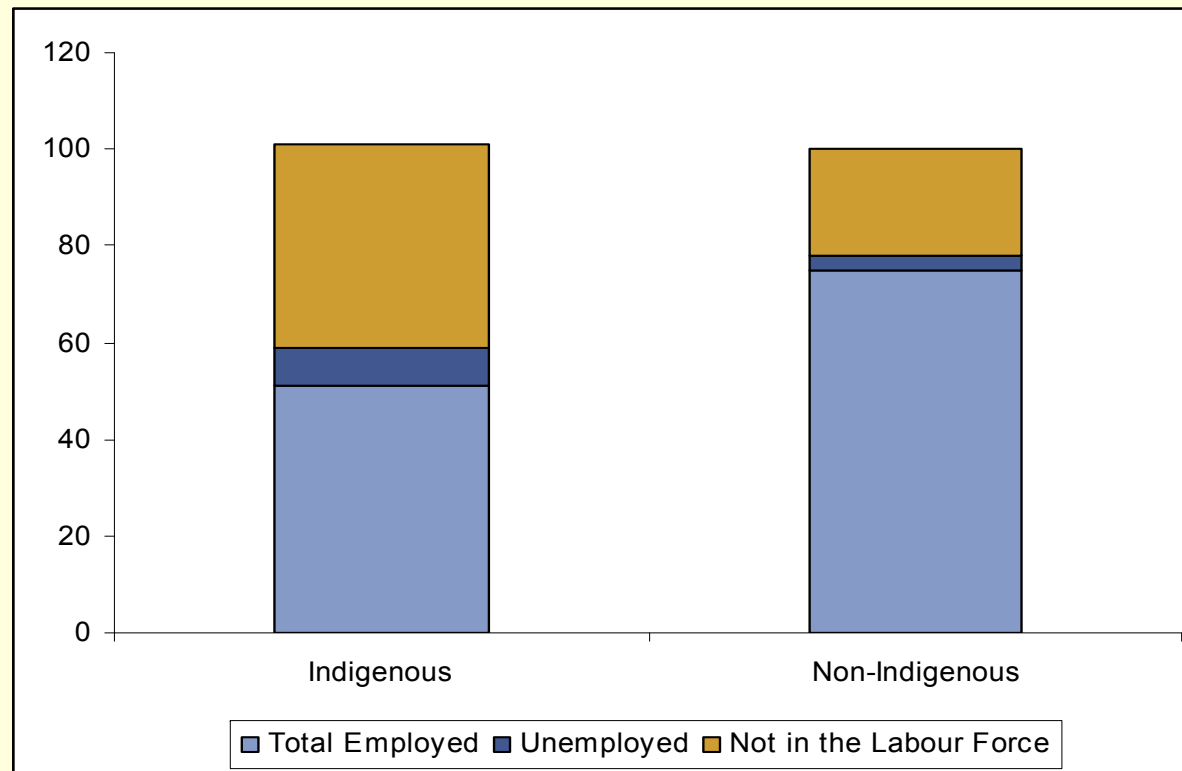




Employment

- Unemployment rates are high
- Some data sources suggest improvement in this area

Labour force status of persons aged 15-64 years, by Indigenous status, 2004-05.





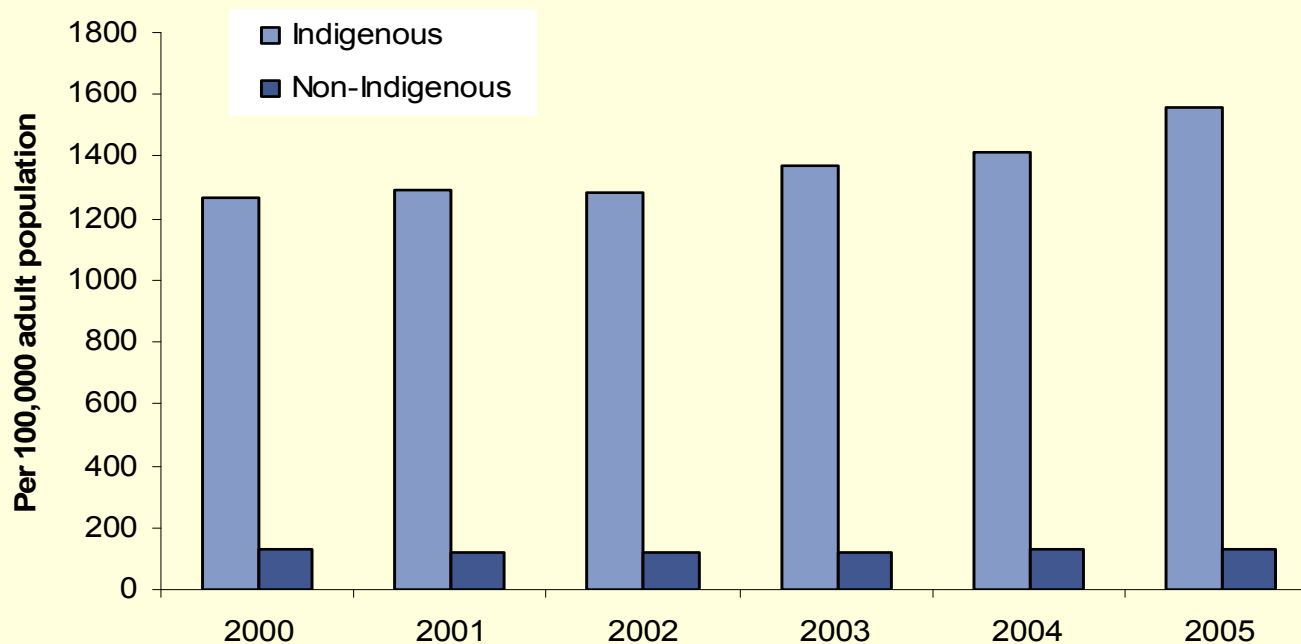
Australian Government

Department of Health and Ageing

Areas of concern

- **Access to safe water supply, sewerage and electricity**
- **Overcrowding in housing**
- **Low income and distribution of income**
- **Exposure to violence, child abuse and neglect**
- **Contact with the criminal justice system, including imprisonment**

Age standardised imprisonment rates by Indigenous status 2000-05



Source: Australian Bureau of Statistics. *Prisoners in Australia* (cat. No. 4517.0)

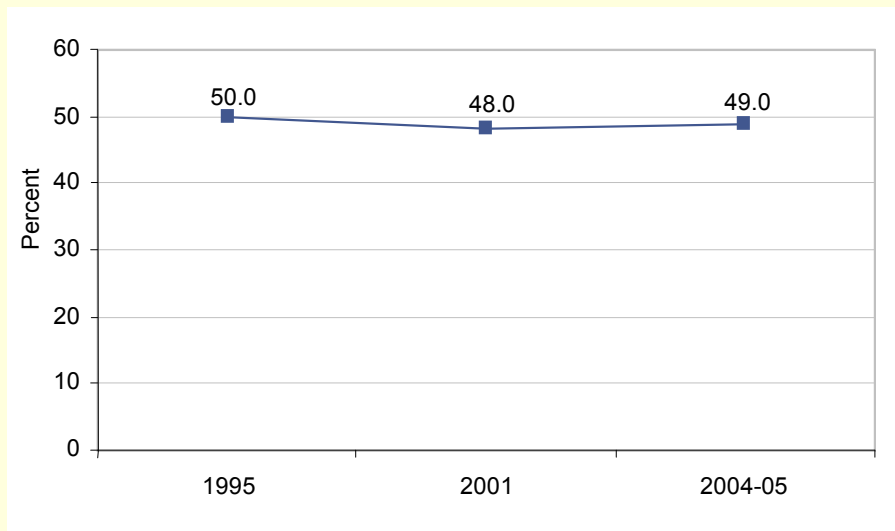


Australian Government

Department of Health and Ageing

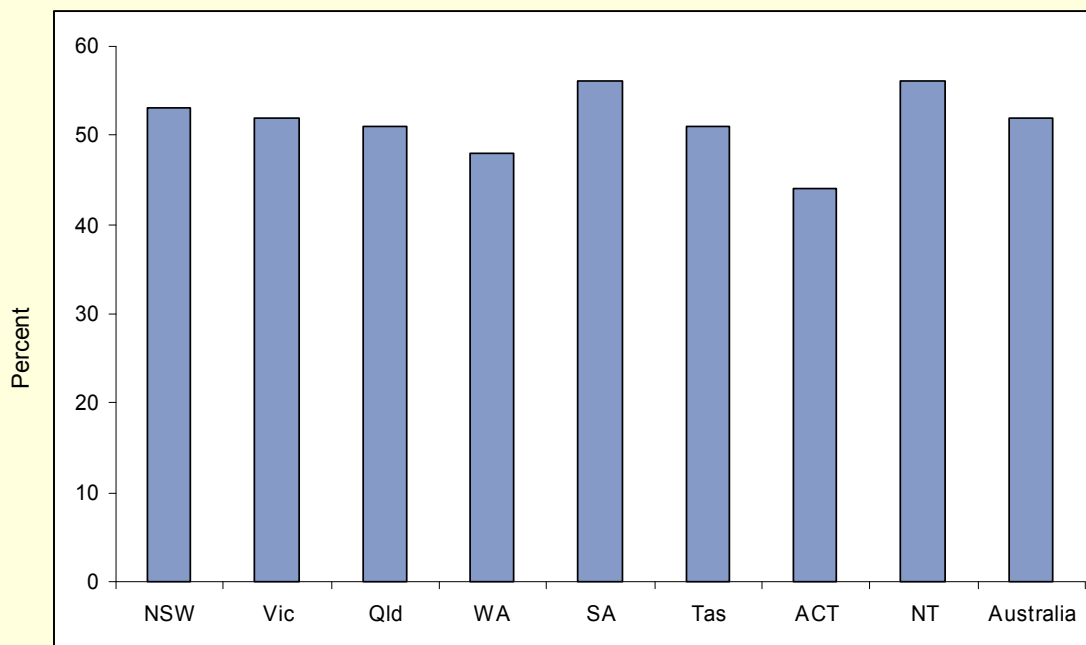
Smoking

Per cent of Indigenous Australians aged 18 years and over reporting they are a current smoker, by Indigenous status, non-remote areas, 1995, 2001 and 2004-05



Source: ABS and AIHW analysis of 1995 and 2004-05 National Aboriginal and Torres Strait Islander Health Survey and 2001 National Health Survey (Indigenous supplement)

Per cent of Indigenous population aged 18 years and over reporting they are a current smoker by state/territory, 2004-05

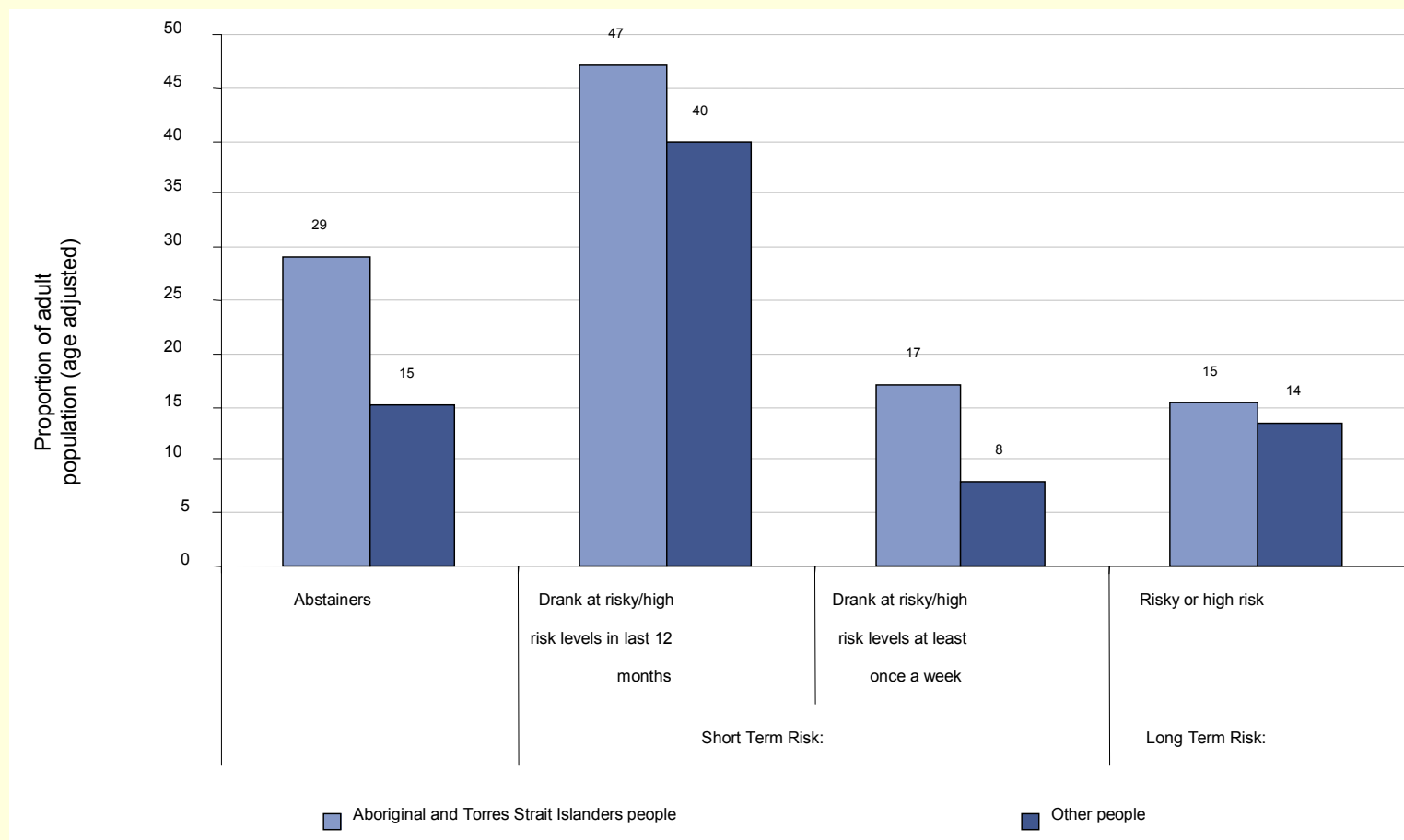


Source: ABS and AIHW Analysis of 2004-05 National Aboriginal and Torres Strait Islander Health Survey and 2004-05 National Health Survey



Risky and high-risk alcohol consumption

Alcohol risk levels by Indigenous status, persons aged 18 years and over, age standardised, Australia 2004-05





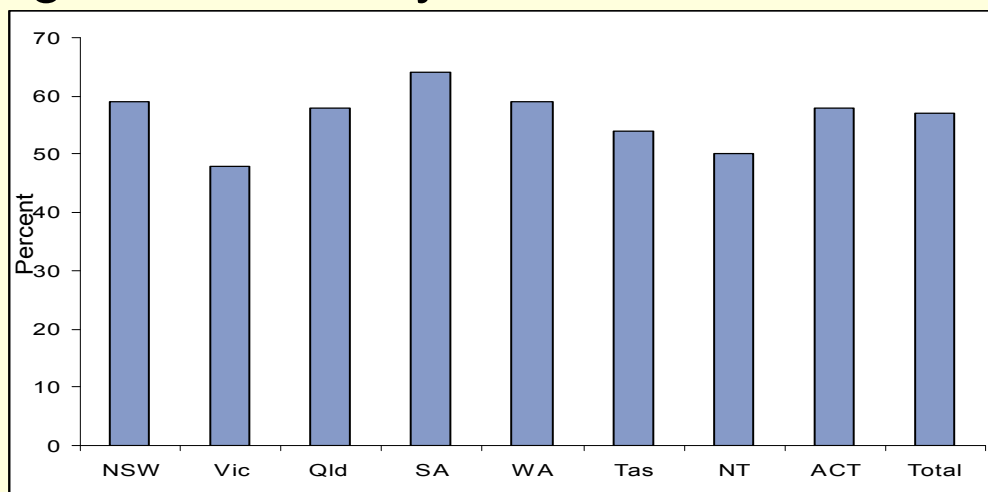
Australian Government

Department of Health and Ageing

Other areas of concern

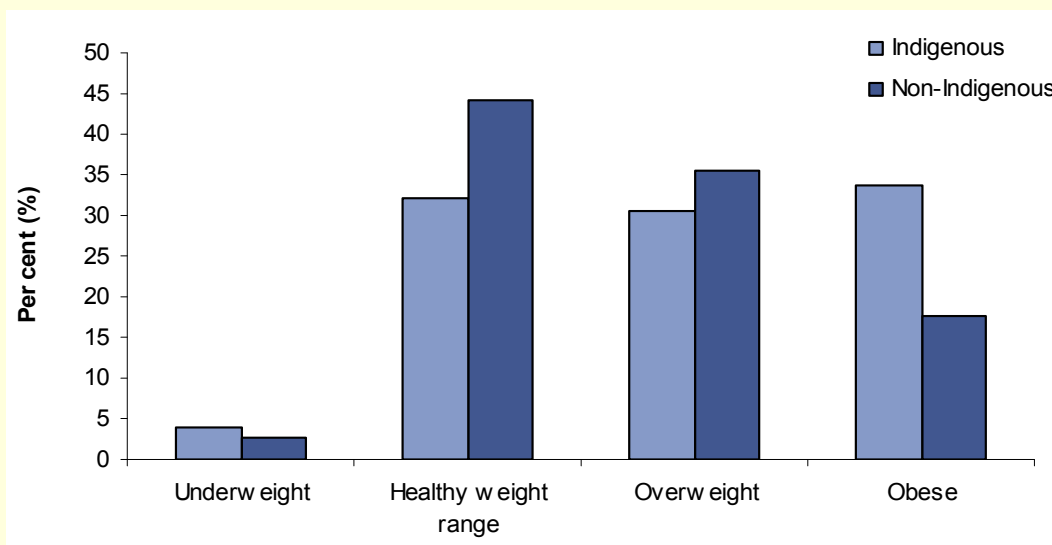
- Nutrition
- Overweight and Obesity

Percentage of Indigenous persons 15 years and over who were overweight/obese by state/territory 2004-05



Source: ABS National Aboriginal and Torres Strait Islander Health Survey, 2004-05

Percentage of adults underweight, overweight and obese, by Indigenous status, 2004-05





Australian Government

Department of Health and Ageing

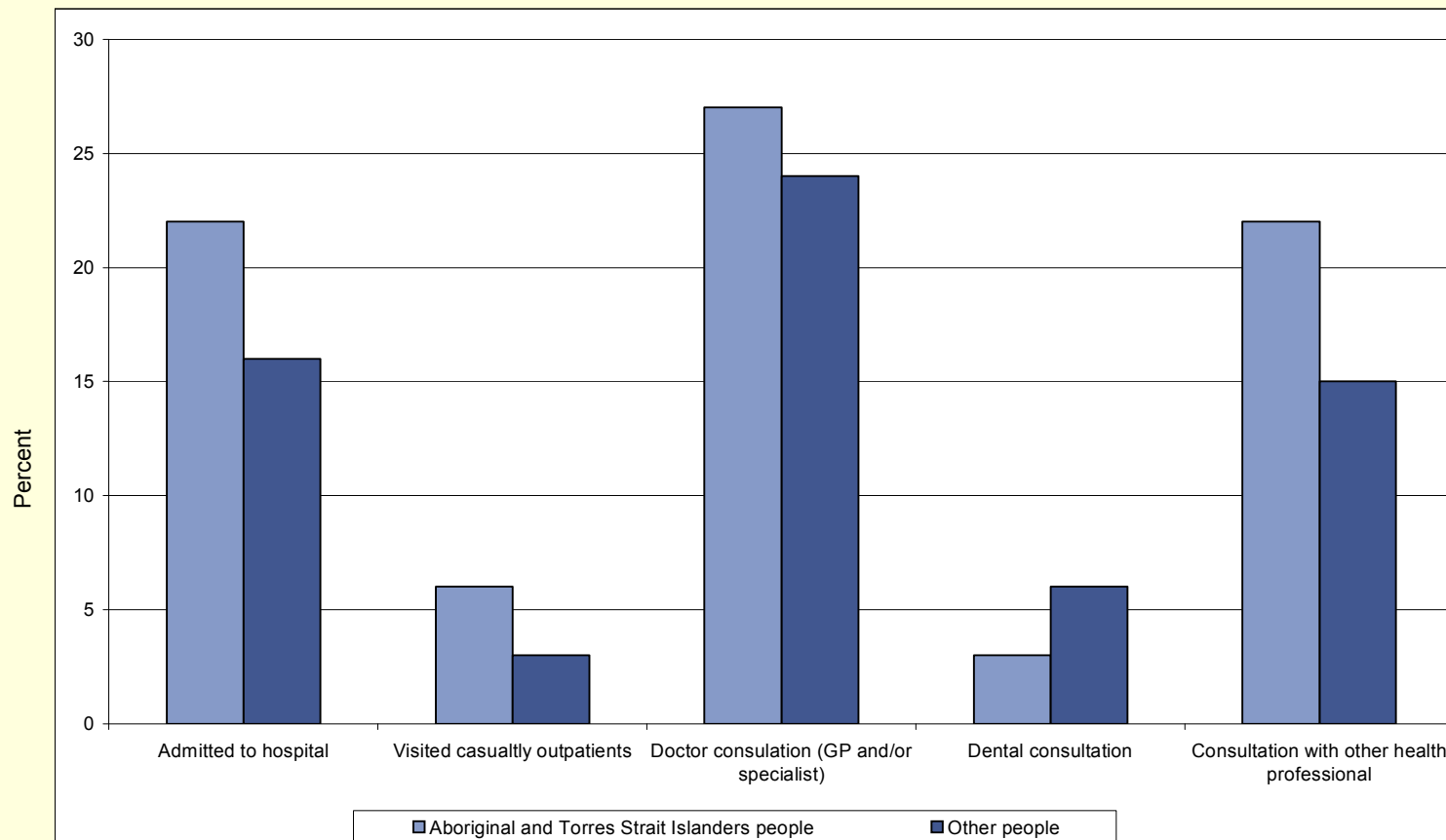
Tier 3: Health Care

- **Access to health care**
- **Areas of success**
 - Antenatal care
 - Immunisation
 - Usual source of care
 - Access to Aboriginal and Torres Strait Islander services
- **Areas of concern**
 - Barriers to health care
 - Differential access to key procedures in hospital and discharge against medical advice
 - Ambulatory care sensitive hospital admissions
 - Access to prescription medicines
 - Breast cancer screening
 - Aboriginal and Torres Strait Islander Australians in the health workforce



Access to health care

Per cent of people aged 15 years and over who accessed health care, by type of health care, within the last 12 months (hospital) or last two weeks (other health care), by Indigenous status, age standardised, Australia 2004-05



Source: ABS and AIHW analysis of 2004-05 National Aboriginal and Torres Strait Islander Health Survey and 2004-05 National Health Survey



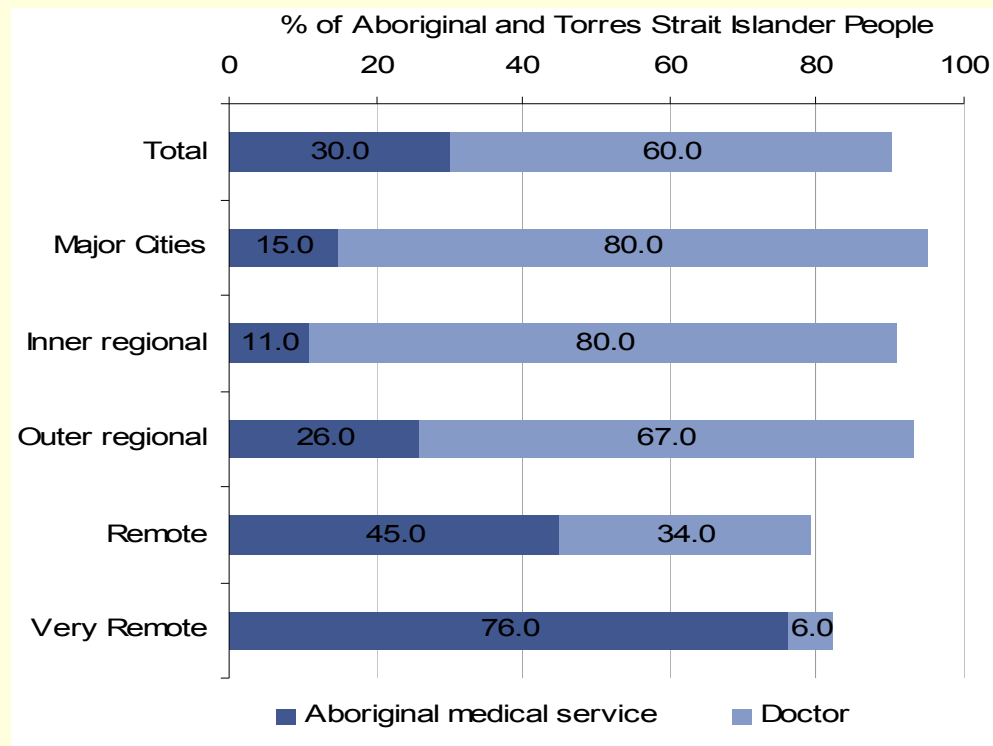
Australian Government

Department of Health and Ageing

Areas of Success

- Antenatal care
- Immunisation
- Usual source of care

Where Aboriginal and Torres Strait Islander peoples usually go if they have problems with health, by remoteness area, 2004-05

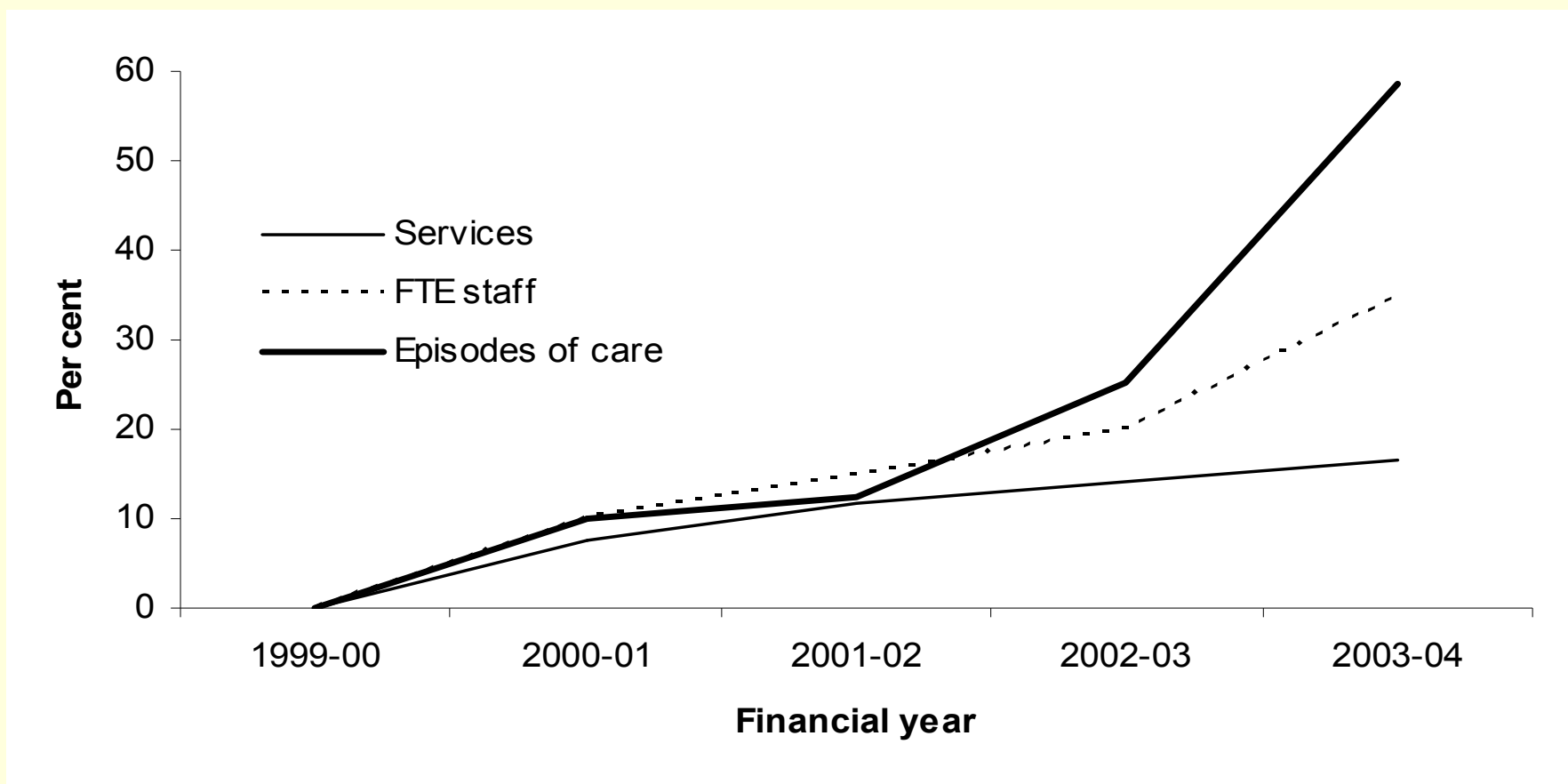


Source: ABS and AIHW analysis of 2004-05 National Aboriginal and Torres Strait Islander Health Survey



Aboriginal and Torres Strait Islander primary health care services

Cumulative percent changes to Aboriginal and Torres Strait Islander primary health care services, 1999-00 to 2003-04



Note: 85 services provided valid episodes of health care data for the 5 years and 107 services provided data on full time equivalent staff for the 5 years presented here.

Source: Service Activity Reporting 2003-04.



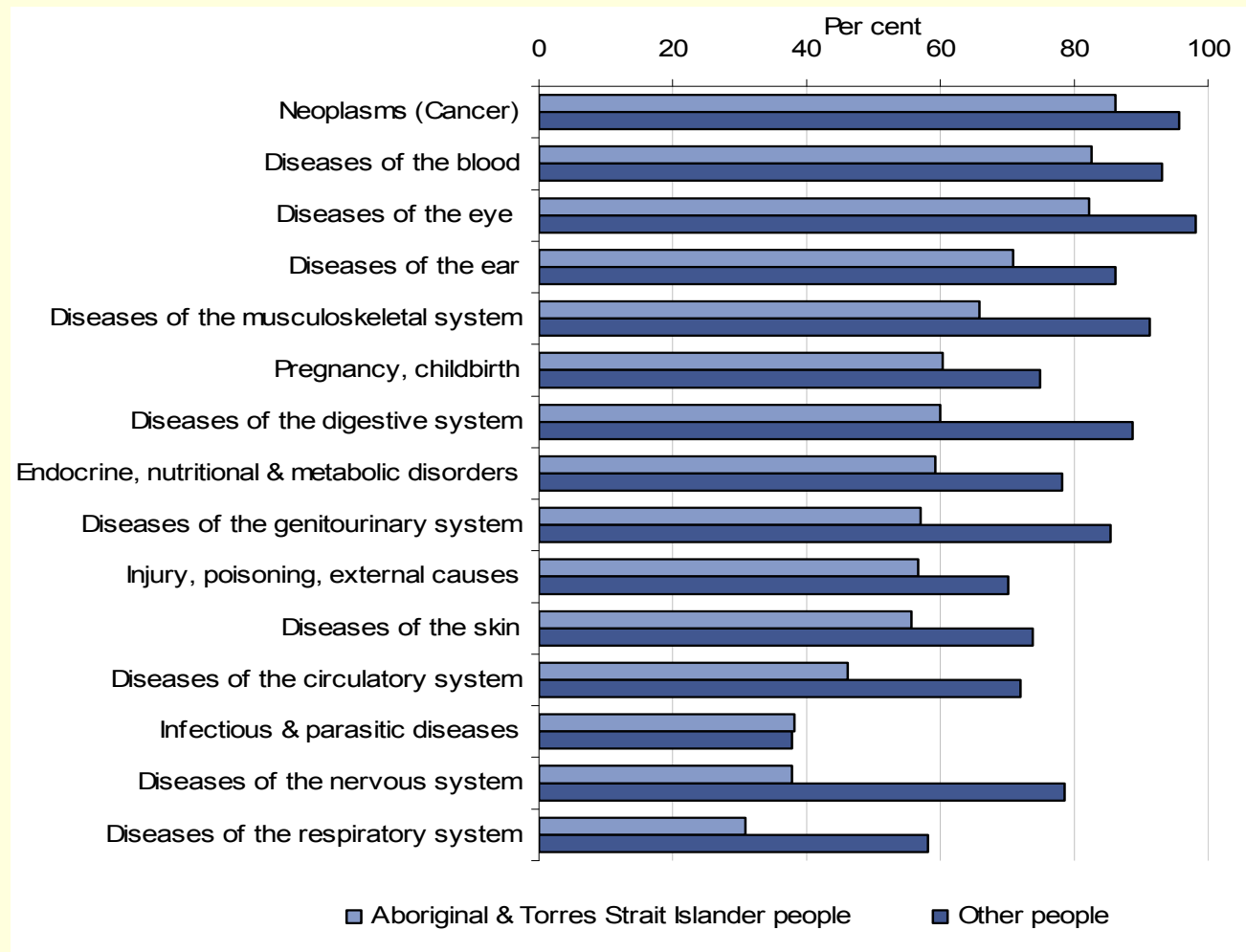
Australian Government

Department of Health and Ageing

Hospital Care

Differential access to key procedures

Per cent of hospital episodes with a procedure reported, selected principal diagnoses and Indigenous status, Qld, WA, SA and NT, 2002-2004



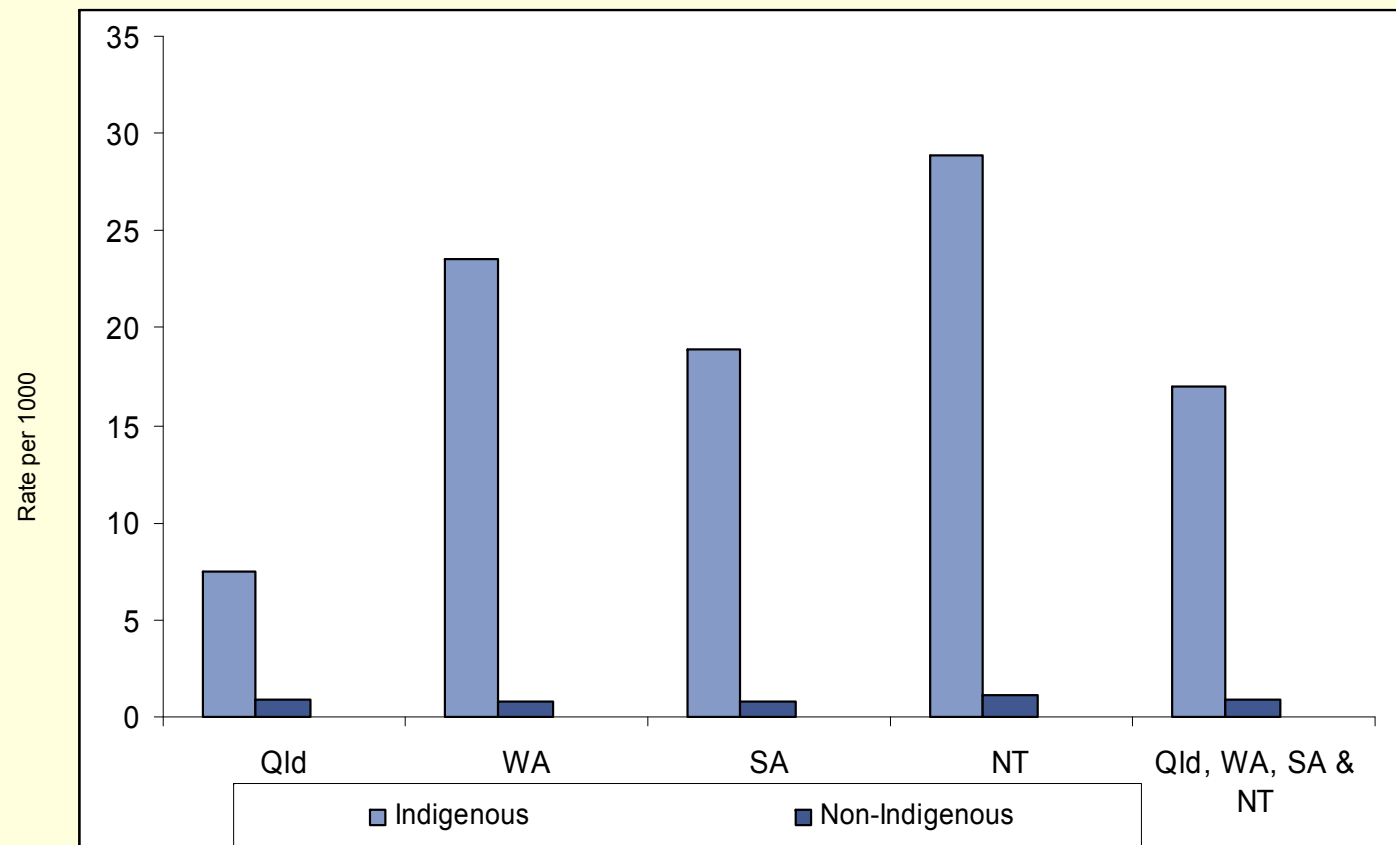
Source: AIHW National Hospital Morbidity Database



Discharge against medical advice

- Indigenous patients in Qld, NT, WA and SA were discharged from hospital against medical advice at 19 times the rate of other Australians

Discharges against medical advice by Indigenous status state/territory (excluding Mental and Behavioural Disorders) in Qld, WA, SA & NT, June 2002 – July 2004



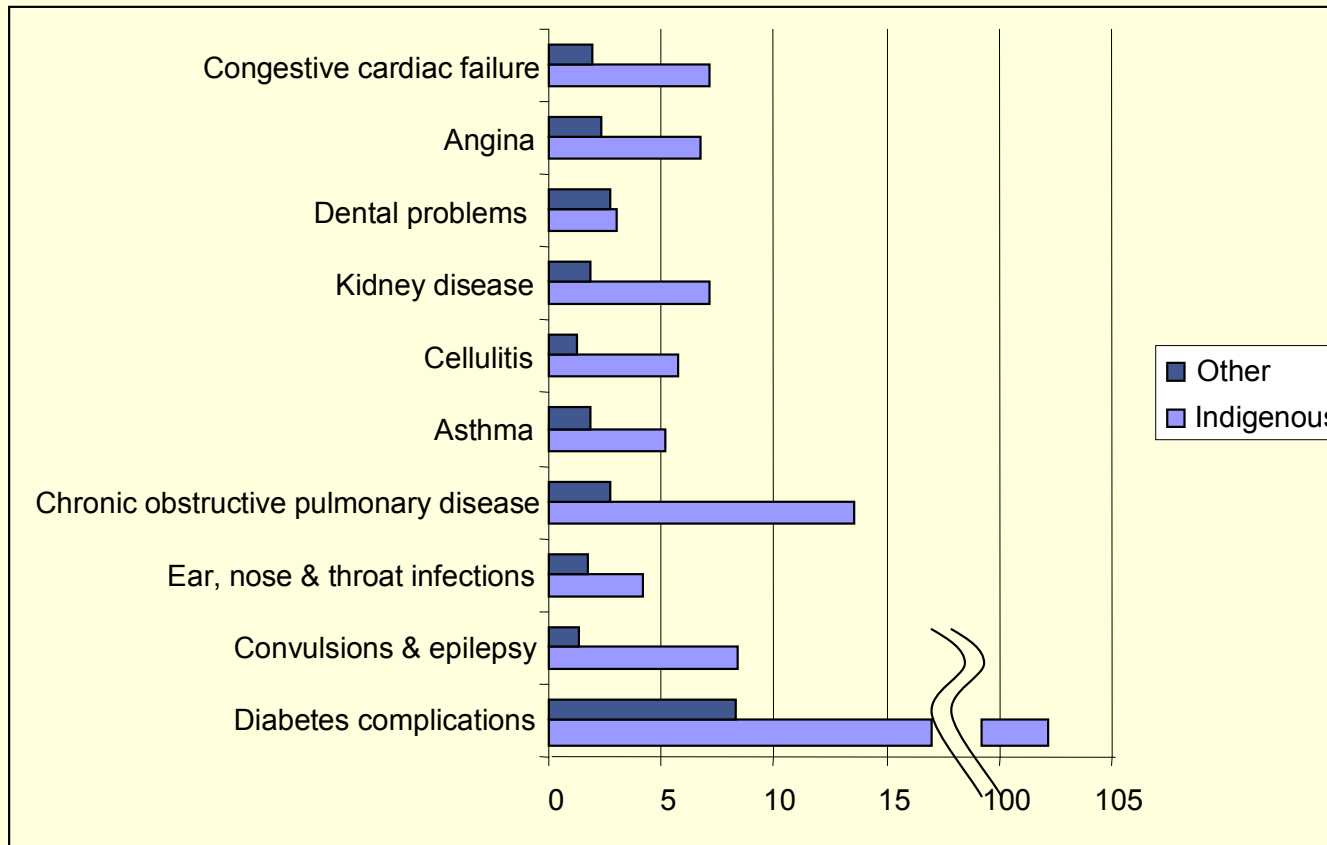


Australian Government

Department of Health and Ageing

Ambulatory care sensitive hospital admissions

Top ten ambulatory care sensitive hospital admissions, by Indigenous status, Qld, WA, SA and NT, July 2002 to June 2004



Rate per 1,000 persons

Source AIHW National Hospital Morbidity Database



Response to Report

1. AHMAC and COAG
2. Whole of Government response
3. Over to you.....