

Contact Details



SOUTH (SA)

Deb Rawlings

PCOC South Zone Co-Ordinator
Ph: 0400 288819
deborah.rawlings@flinders.edu.au

NORTH (QLD & Nth NSW)

Jane McEneirny

PCOC North Zone Co-Ordinator
PH: (07) 3138 6130
jane.mcenierny@qut.edu.au

WEST (WA & NT)

Helen Walker

PCOC West Zone Co-Ordinator
PH: (08) 9222 0289
Helen.Walker@health.wa.gov.au

CENTRAL (NSW,ACT, Tas)

Dave Fildes

PCOC Central Zone Co-Ordinator
PH: 0407 935384
dfildes@uow.edu.au

CENTRAL (Victoria)

Kathy Hendry

PCOC Zone Co-Ordinator Victoria
PH: 0418 318 654
khendry@mercy.com.au

PCOC National Manager

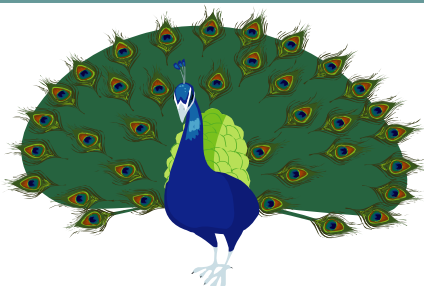
Prue Watters

PH: (02) 4221 5093
prue@uow.edu.au

PCOC Training Manager

Maree Banfield

PH: (02) 4221 5965
banfield@uow.edu.au



BULLETIN

Number 1
February 2008

Welcome to this first edition of the PCOC Bulletin which we hope will keep readers informed about PCOC's progress and prompt discussion on the PCOC email list-server. The list-server is designed to be a group email for the purposes of disseminating information to and from all members on the list. Contact darcy@uow.edu.au if you are interested in participating.



What is PCOC?

Palliative Care Outcomes Collaboration

PCOC is a voluntary quality initiative which aims to assist Palliative Care Service providers to measure the standard and quality of care which is a goal of the *National Palliative Care Strategy*. This will be achieved by collecting and analysing data and reporting findings to service providers.

Developing a national data set for palliative care that can be used in both inpatient and community settings requires a gradual process of developing and refining the data set. The PCOC Version 1 data was collected by a small number of services for approximately 18 months. The Version 2 data set has evolved based on the experience collecting Version 1 and following broad consultation with services around the country, as well as the Scientific and Clinical Advisory Committee.

The project is now into its 3rd year. Support will continue for the many specialist metropolitan and regional services that are collecting data, while focus will also shift to introducing other services to PCOC, especially those in rural areas.

Patient and Carer Survey

PCOC is offering palliative care services the opportunity to participate in a snapshot survey of patient experience and carer satisfaction. These surveys will provide services with additional information that can be used for quality purposes. PCOC will also analyse these data and provide each service with a report that compares their results to aggregated data from all participating services. We await, with interest, the results of these surveys.

Workshop for Hospital-based Palliative Care Consultation Services—11th MARCH 2008, Sydney

For staff of these services to agree on relevant data items that describe outcome measures for consultation services. If you have any thoughts about this workshop or would like to highlight relevant issues, please let us know by posting a message on pcoc_group@mailman.uow.edu.au

Internet Links Version 2 dataset

<http://chsd.uow.edu.au/pcoc/documents/pcocv2dataset.pdf>