

Contact Details



SOUTH (SA)

Deb Rawlings

PCOC South Zone Co-ordinator
deborah.rawlings@flinders.edu.au
Ph: 0400 288819

NORTH (QLD & Nth NSW)

Jane McEniery

PCOC North Zone Co-ordinator
PH: (07) 3138 6130
jane.mceniery@qut.edu.au

WEST (WA & NT)

Helen Walker

PCOC West Zone Co-ordinator
PH: (08) 9489 2878
Helen.Walker@health.wa.gov.au

CENTRAL (NSW,ACT & Tas)

Dave Fildes

PCOC Central Zone Co-ordinator
PH: 0407 935384
dfildes@uow.edu.au

CENTRAL (Victoria)

Kathy Hendry

PCOC Zone Co-ordinator Victoria
PH: 0418 318 654
khendry@mercy.com.au

PCOC National Manager

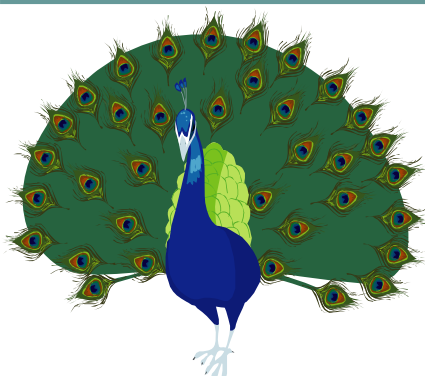
Prue Watters

PH: (02) 4221 5093
prue@uow.edu.au

PCOC Training Manager

Maree Banfield

PH: (02) 4221 5965
banfield@uow.edu.au



BULLETIN

Number 3 May 2008

Welcome to this 3rd edition of the PCOC bulletin which we hope will keep readers informed about PCOC's progress and prompt discussion on the PCOC email list-server. The list-server is designed to be a group email for the purposes of disseminating information to and from all members on the list. Contact darcy@uow.edu.au if you are interested in participating.

Consultative Services Workshop – review

65 staff from 44 services attended the workshop held in Sydney on 11 March. A survey completed by participants revealed more similarity amongst services than anticipated. The results of the survey were discussed at the workshop and led to agreement that the definitions of the types of services should be re-drafted and the services surveyed using the new definitions.

Workshop for Community Services – TUES 6th MAY 2008, Melbourne

This is to discuss whether the current PCOC data set meets the needs of the community services.

Representatives from Community Palliative Care Services across the country have been invited to participate in a similar workshop to the one held for the Consultative Services. The workshop is to discuss what data items from the PCOC data set will be useful for clinicians and managers providing a community palliative care service. Different models of care within geographical regions, different roles and resources, and data collection practices have posed challenges to PCOC. This workshop will be an opportunity for consensus on what data should be collected.

SNAPshot Update

We have produced an update to SNAPshot (Version 3.82(e)). This version incorporates a range of enhancements, many of which have been suggested by users. We hope that the changes have improved the system's overall functionality and ease of use. Services will all receive a copy of the upgrade and this needs to be installed before the data is extracted and sent to Wollongong. A covering letter will explain how to extract the PCOC V2 data in the brand new SnapShot extract. The Zone Coordinators will be able to assist with any of this if necessary.

Most importantly we need to have the data from services no later than **9th May 2008**. Unfortunately if the data is not received by this date we will not be able to provide a PCOC report for the service concerned.

Education Review

Evaluation of the PCOC education program is underway and Sabina Haantjens has been travelling to each state to visit Palliative Care Services. Sabina can be contacted via email :Sabina.haantjens@sesiahs.health.nsw.gov.au